



# Light Control Films

for special back-lit graphic effects

Range includes:

- Block-out Films: 3635-20; 3635-22
- Diffuser Films: 3635-30; 3635-70
- Day/Night Film: 3635-91
- Light Enhancement Film: 3635-100
- Dual Colour Film Series: 3635-200

# Expanding your capability through creative sign design

3M™ Light Management Films expand your capability without the need for additional manufacturing equipment or lighting components. But, more importantly, these innovative films will

help you create the kind of eye-catching signs, awnings, fascias and channel lettering that will not only create new business opportunities for you, but also enhance your customer's image.

## 3M™ Light Enhancement Film 3635-100

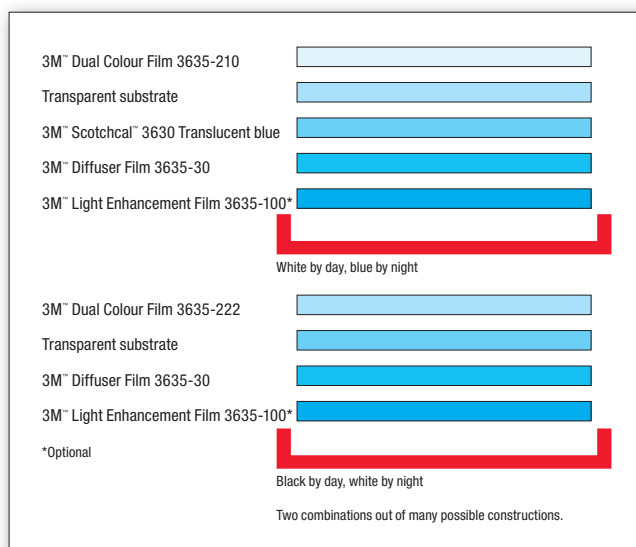
This film is a revolutionary product for creating signs that are not only dramatically brighter in appearance, but also more uniformly lit. By lining sign cabinet interiors with this proprietary film, you can produce signs that are up to twice as bright as conventional cabinets with white-painted or bare-metal interiors. 3M Light Enhancement Film maximises available light by reflecting and

diffusing it, resulting in a remarkably even spread of illumination across the entire sign face. With LEF, neon tubes can often be reduced in length or replaced with fluorescent tubes. In signs where fluorescent tubes are used, up to 50% fewer tubes may be required, resulting in lower component costs and/or energy consumption. Results will vary based on specific installations.



## 3M™ Dual Colour Film Series 3635-200

Visibility around the clock with 3M™ Dual Colour Film Series 3635-200 – designed to be used with 3M™ Scotchcal™ Translucent Graphic Film Series 3630 and 3M™ Block-Out or Diffuser Films. Dual Colour Film is available in black and white, but can also be ordered in a customised colour in certain quantities. Alternatively, colour effects by day can be created by screen-printing on white dual colour film with 3M branded solvent or UV screen print inks to expand your options even further. A special 15% perforation pattern provides saturated daylight colour when the sign is not illuminated. Secondly, by night, when the sign is illuminated, the special perforation pattern provides you with a bright and durable illuminated sign in another colour. The results allow you to, efficiently produce, two colour special effects on internally illuminated channel letters, signs and displays; a true daytime colour and a bright second colour at night!



### 3M™ Day/Night Film 3635-91

The Day/Night film can be used on 3M™ Panaflex™ Awning and Sign Facing 945 GPS, as well as conventional rigid substrates.

By day, the film has a matte grey translucent appearance; at night, when the sign is illuminated, the film diffuses light and appears white.

Colour can be achieved at night by using a 3M translucent film on the reverse (inner) side of the Day/Night Film.

### 3M™ Block-Out Films 3635-20 and 3635-22

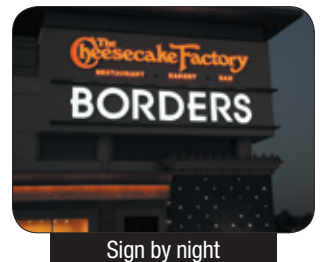
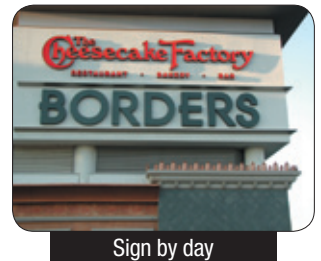
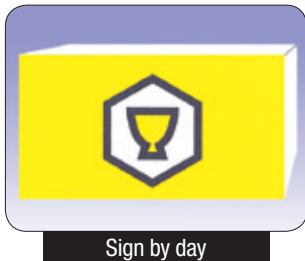
These films can be applied to the outer (first) service of a rigid or flexible sign face and also the inner (second) surface of a rigid sign face.

They are totally opaque and can be used to block out the light diffusion in some areas of the sign face or to create special effects which are revealed only at night (or during the day when the sign is illuminated).

### 3M™ Diffuser Films 3635-30 and 3635-70

These diffuser products are neutral density translucent films which have been developed to offer better light diffusion and uniformity across the entire sign face. They can also be used to create varying degrees of illumination with a back-lit sign face. For example, diffuser films can be applied behind a background colour or secondary line of text to reduce its brightness, while a logo, for example can be fully illuminated for maximum emphasis. Suitable for second surface application only.

Just some of the special effects you can create using 3M™ Light Management Films



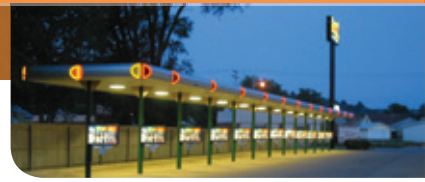
These innovative films  
will help you create  
eye-catching signs

## 3M™ Block-Out Films 3635-20 and 3635-22

- For blocking out light when applied to internally-illuminated signs
- Creates a neon-type effect when used on the second surface of clear acrylic substrate
- Screen printable using 3M™ Screen Printing Ink Series 1900
- Compatible overlaminate: 3M™ Scotchcal™ High Gloss Overlaminate 3640GPS high gloss overlaminate
- Appearance:
  - 3635-20: white with black adhesive
  - 3635-22: black with a white adhesive

## 3M™ Diffuser Films 3635-30 and 3635-70

- Diffuser film for clear plastic internally-illuminated signs
- Use on second surface without adding another film. Not for use on 3M™ Panaflex™ Awning and Sign Facing 945 GPS
- Use on first surface of application only if completely covered by another layer of UV-resistant film
- Appearance: white translucent



## 3M™ Day/Night Film 3635-91

- Day/Night film for creating dark graphics during the day and white or coloured graphics at night on internally-illuminated signs
- Suitable for use on first and second surfaces apart from second surface of 3M™ Panaflex™ Awning and Sign Facing 945 GPS
- Compatible overlaminate: 3M™ Scotchcal™ High Gloss Overlaminate 3640GPS
- Appearance: smoked grey

## 3M™ Light Enhancement Film 3635-100

- A light-enhancing liner for light boxes, channel letters and other back-lit applications
- Appearance: white with blue protective film

## 3M™ Dual Colour Film Series 3635-200

- Dual colour films have a 15% perforated pattern to provide saturated daylight colour during the day, when the sign is not illuminated and a bright durable illuminated sign in another colour at night, when illuminated.
- Appearance:
  - 3635-210: white
  - 3635-222: black

