

Illusions Colour Chart

Transforms ideas into reality

larson[®]

Aluminium composite panels for architectural envelopes

larcove[®] A2

Aluminium honeycomb panels for architectural envelopes



Alucoil[®]

Grupo Alibérico



Erasmus Campus Student Housing (Netherlands)

Illusions Holo Gold Silver
 Architect: Mecanoo architecten

Illusions Holo

The survival of any species is very related to the capacity to adapt to the environment. **Alucoil®** has been inspired by the ease of chameleons to change their image to create this range of Holo finishes, where a finish becomes two and even three different colours depending on how the light affects the façade.

Eyesight different

#change colours
 #iridescent



**larson®
 larcare® A2**

ILLUSIONS HOLO



Holo Pure White Gold 90G
 ES2357



Holo Red Green 90G
 ES1627



Holo Opal Blue Green 90G
 ES2487



Holo White Blue 90G
 ES2359



Holo Grey Pink 90G
 ES2341



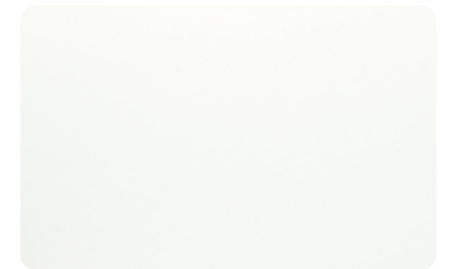
Holo Galaxy Blue 90G
 ES2355



Holo Red Orange 90G
 ES2180



Holo Blue Gold 80G
 ES2430



Holo White Silver 90G
 ES2216



Holo Gold Silver 30G
 ES1711

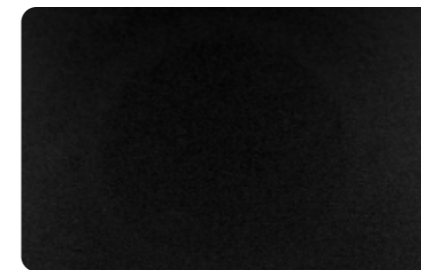


Holo Desert Gold 90G
 ES1995



Holo Carnelian Black Copper 30G
 ES1817

ILLUSIONS SPARKLING



Sparkling Black
 ES2351



Sparkling Silver Grey Pearls
 ES2194



URBAN QUARTZ (Rennes, France)
 ALUNATURAL Bright TL
 Architect: Hamonic et Masson

Illusions Alunatural

Because sometimes there is no better finish than the one given by our surroundings, the range of Alunatural finishes offer different types of reflection, sharpness and even colours depending on the desired target.

Reality Effect

#reflectioncolours
 #sharpnesscolours

larson® & larcove® A2

Attention to the special characteristics of the Alunatural and Real Anodized range finishes detailed in the technical specification (request them from your **Alucoil®** contact). Alunatural and Real Anodized finishes range not recommended in aggressive environments / coast.

ILLUSIONS ALUNATURAL & MIRROR



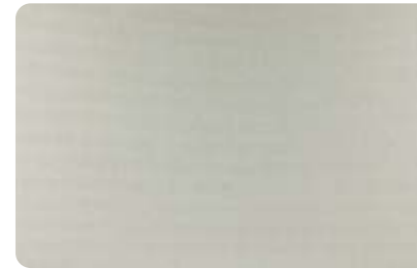
Alunatural
 Anodic Brushed Glossy 90G
 ES1623



Alunatural
 Anodic Brushed Satin 60G
 ES2026



Alunatural
 Anodic Brushed Matt 10G
 ES1757



Alunatural
 Bright TL 90G
 ES1448



Alunatural
 Amber Brushed 40G
 ES2111



Alunatural
 Gold Brushed 60G
 ES1544



Alunatural
 Elox Umber TL 10G
 ES2033



Alunatural
 Titanium Brushed 10G
 ES1370



Alunatural
 Quartsinc Brushed 10G
 ES1736



Alunatural
 Champagne Brushed 90G
 ES1581



Alunatural
 Red Copper TL 60G
 ES1732



Alunatural
 Zinc Green Brushed 10G
 ES1564



Alunatural
 Elox Umber Light Brushed 60G
 ES2029



Alunatural
 Elox Champagne Medium Brushed 60G
 ES1967



Mirror
 Architecture
 ES1977



Wafra Living (Kuwait)
 Illusions Anodized Art Nouveau Gold
 Architect: AGI Architects

Illusions Anodized

To anodize is to protect, but also to beautify the aluminium.

Alucoil® has a wide portfolio of finishes that match anodized finishes, keeping the folding and curving properties of composite panels. There are no limits to elegance.

Elegance in the design
 #nolimitstoelegance
 #protectcolours



larson®
larcore® A2

ILLUSIONS ANODIZED LOOK



Anodized Look Shadow Grey 9007
 (ES2901)



Anodized Look Silver Bronze C31
 (ES2290)



Anodized Look Light Bronze C32
 (ES2900)



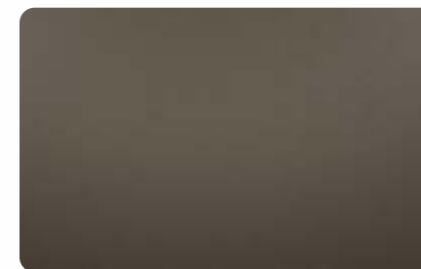
Anodized Look Middle Bronze C33
 (ES2917)



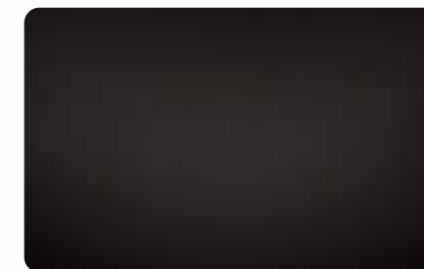
Anodized Look Dark Bronze C34
 (ES2368)



Anodized Look Black C35
 (ES2615)



Anodized Look Autumn
 (ES2902)



Anodized Look Dark Grey
 (ES2345)



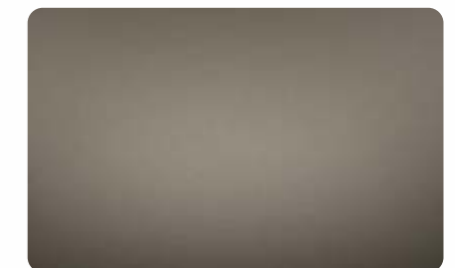
Anodized Look Art Nouveau Gold
 (ES2919)



Anodized Look Silver EV1
 (ES2920)



Anodized Look Dark Copper
 (ES2918)



Anodized Look Champagne Bronze
 (ES2903)

ILLUSIONS REAL ANODIZED



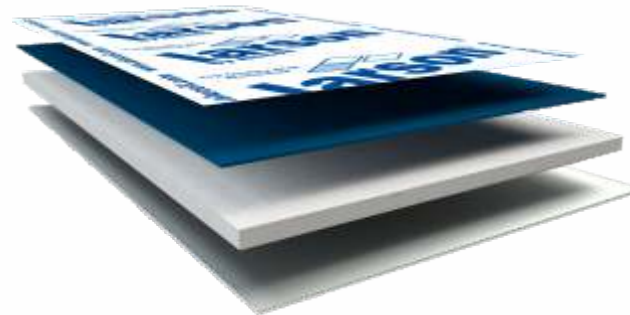
Real Anodized
 Natural 8µ
 ES1341



Real Anodized
 C-Brite 8µ
 ES2017

larson®

Aluminium composite panels for architectural envelopes



Protective film
Coated aluminium
Mineral FR or A2 Core
Aluminium with protection primer

larson® FR aluminium composite panel, is a high-tech product for architectural façade cladding. It is formed with two aluminium sheets, 5005 alloy, bonded by a mineral fire retardant (FR) core. **Alucoil®** has developed this core that delays panel combustion.

CERTIFICATION: EPD® Environmental product declaration

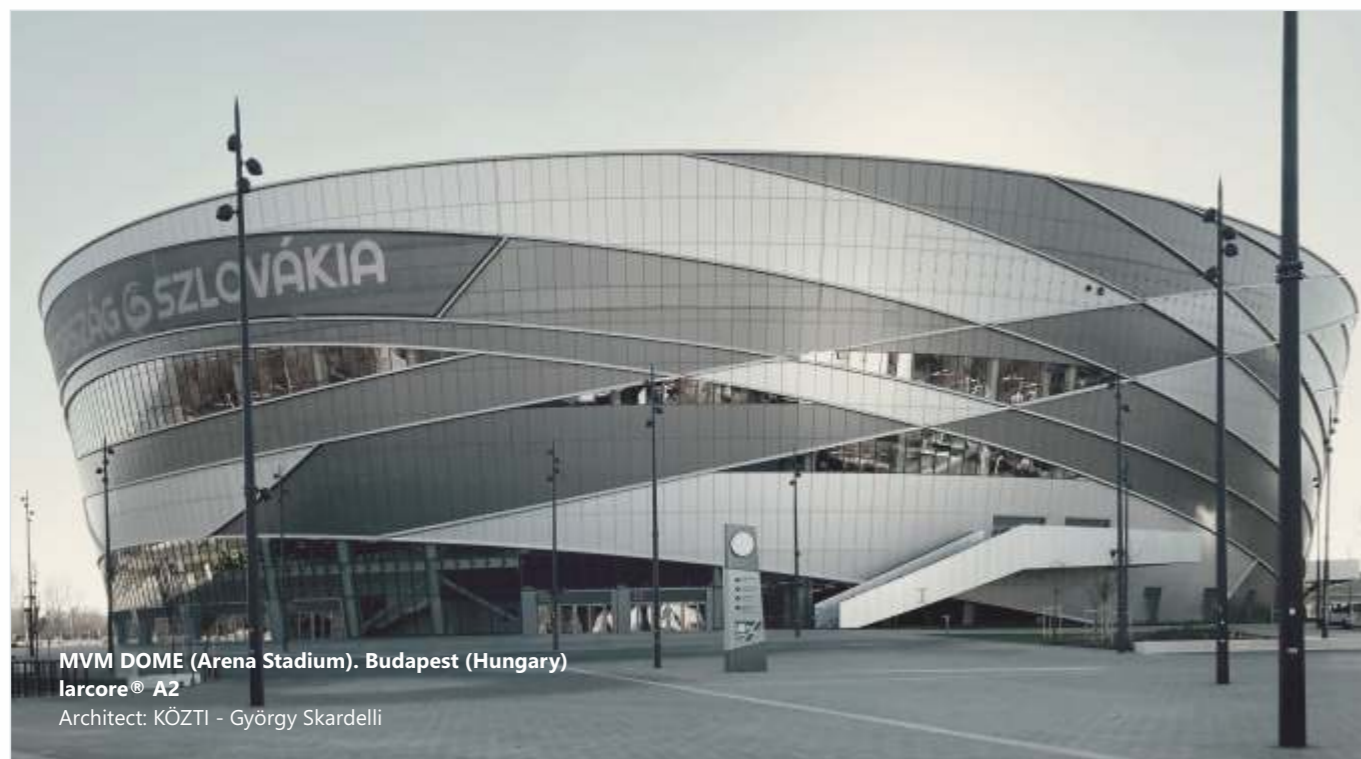
TESTS:

- B-s1, d0 EN 13501-1 (**Alucoil's** vertical riveted & 45mm cassette installation systems).
- BS 8414-1 Full scale test (details of tested constructive system appear in Tecnalia's 070717-002A report).
- NFPA 285 Full scale test (details of tested constructive system appear in Intertek's 102936114SAT-004B report).

larson® A2 is the new aluminium composite panel developed by **Alucoil's** R&D department for architectural cladding. This panel has been developed to be used in those countries whose regulations prevent the use of other types of composite panels which don't achieve the A2-s1, d0 fire class.

TESTS:

- **A2-s1, d0** EN 13501-1 (**Alucoil's** vertical riveted & 45mm cassette installation systems).
- **BS 8414-2** Full scale test (cassette installation system).



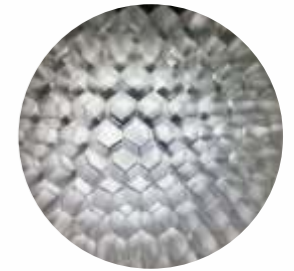
MVM DOME (Arena Stadium). Budapest (Hungary)
larcore® A2
Architect: KÖZTI - György Skardelli

larcore® A2

Aluminium honeycomb panels for architectural envelopes



Protective film
Coated aluminium
Bonding layer
Aluminium honeycomb core
Bonding layer
Aluminium



1. larcore® A2 14 mm. A proposal based on clips that fix the edged panels to a very reduced substructure. A new concept that is extraordinarily light, non-combustible and with perfect flatness.

CERTIFICATIONS: EPD® Environmental product declaration

CLASSIFICATIONS: Fire classification A2-s1, d0 EN 13501-1.

2. larcore® A2 6 mm. An innovative solution that reduces the substructure on the façade by 30%, but can be fabricated with traditional tools.

CERTIFICATIONS: EPD® Environmental product declaration

TESTING: Large scale test BS 8414-1 & BS 8414-2, with **Alucoil® Hidetech® LIGHT** installation system.

CLASSIFICATIONS: Same composition and quantity of adhesive as larcore® A2 14 mm + Hidetech® PRO installation system by Alucoil®, classified A2-s1, d0 according to EN 13501-1.

3. larcore® A2 range of panels with 8 - 10 - 14 or 20 mm thickness.

Panels developed for systems present in the market such as glued, riveted or screwed.

[Extended technical data sheet available upon request.](#)

[Please request with technical department to confirm exact values to be used in specific calculations or projects.](#)



Victoria University (Australia)
Illusions Alunatural Champagne Glossy
Architect: Woods Bagot

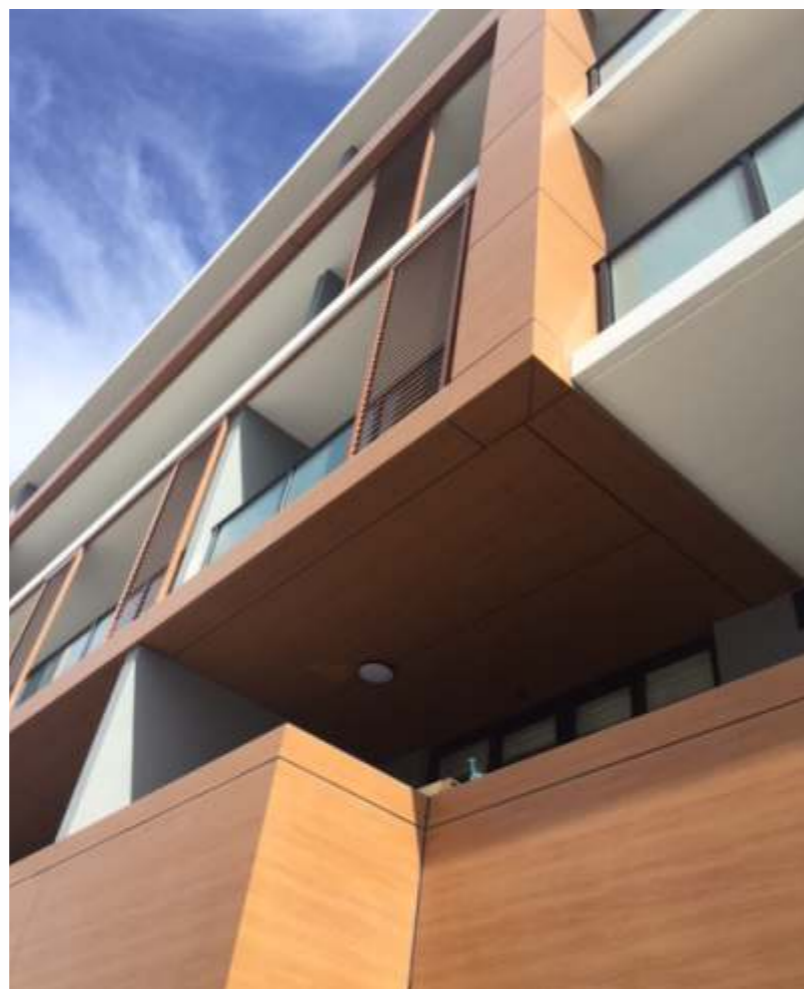


Endeavour apartments (Australia)
 Illusions Design Wood English Cherry
 Architect: Loucas Architects

Illusions Design

Why be satisfied with any kind of finish if we can match the desired design with the maximum coating quality?. The range of customized colours mimics of ceramics, the oxide of metals or the the warmth of the wood all with the durability and lightweight qualities of a composite panel.

Projects with personality
 #customized
 #exclusive



larson®
larcove® A2

ILLUSIONS DESIGN PVC

Consult possibilities and properties concerning ACM PVC 200µ



Design PVC Wood Concrete Oak
 ES2107



Design PVC Wood Alpino Oak
 ES2108



Design PVC Wood Malta Oak
 ES2109



Design PVC Avellino Rost
 ES2106



Design PVC Ginger Oak
 ES2522



Design PVC Turner Oak
 ES2523

ILLUSIONS DESIGN



Design Aciero Corten
 ES2190



Design Wood Pale Oak
 ES2151



Design Wood Colonial Red
 ES2160



Design Wood Golden Oak
 ES2161



Design Wood French Walnut
 ES2173



Design Dune Lime
 ES2479



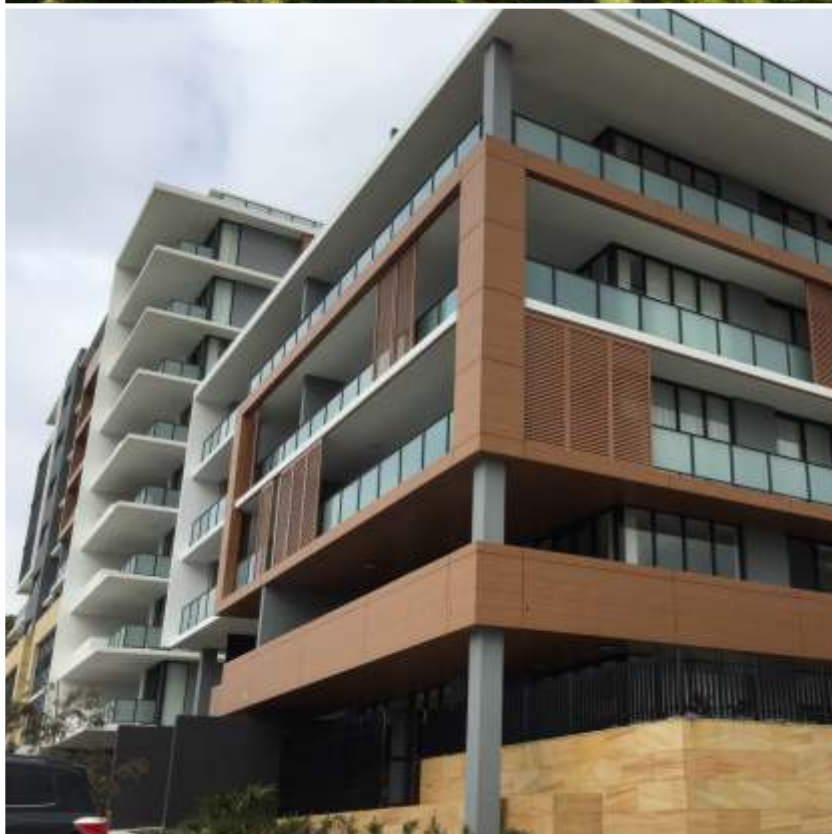
Design Washed Concrete
 ES2262



Design Industrial Concrete
 ES2145



Design Urban Concrete
 ES2146



Design Zinc Patina
ES2153



Design Copper Patina
ES2164



Design Light Oyster Travertine
ES2528



Design Apollo Stone
ES2508



Design Moon Concrete
ES2520



Design Umber Lime
ES2518



Design Misty Stone
ES2519



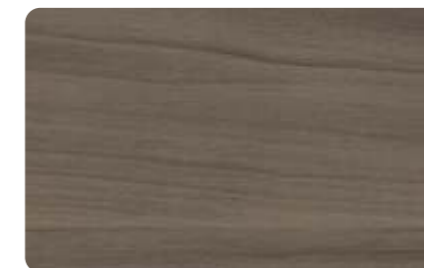
Design Pebble Stone
ES2517



Design Wood Birch Oak
ES2529



Design Wood Dark Oak
ES2541



Design Wood Tender Oak
ES2510



Design Wood Cedar Oak
ES2509



Design Wood Sunny Pear
ES2511



Design Wood Zebra
ES2515



Design Wood Koya Line
ES2516



HMC school Rotterdam (Holland)
 Illusions Textured Basalt & RAL 2001 and 7016
 Architect: RoosRos Architecten

Illusions Textured

If you wish feel stone, concrete or earth finishes in your facade or to presume of the oxide of metals and the texture of basalt or slate with lightweight qualities of a composite panel you option is the textured finishes.

Projects with personality

#customized
 #exclusive



larson®
larcove® A2

ILLUSIONS TEXTURED



Textured Anthracite Bold
 ES2451



Textured Anodic Bold
 ES2291



Textured Rough Clay
 ES2165



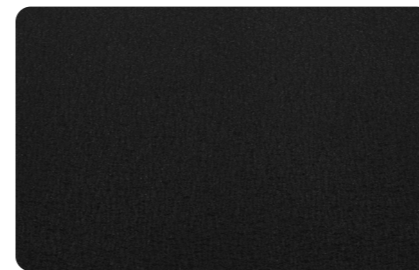
Textured Rough Terra Di Sienna Light
 ES2499



Textured Rough Spicy
 ES2172



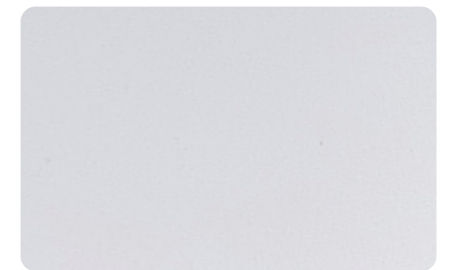
Textured Rough Bark
 ES2505



Textured Rough Boron
 ES2498



Textured Rough Shell
 ES2503



Textured Rough Cotton
 ES2169



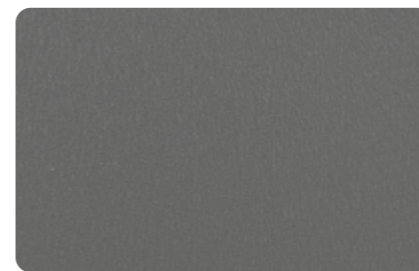
Textured Rough Terra Cotta Light
 ES2500



Textured Rough Nugget
 ES2502



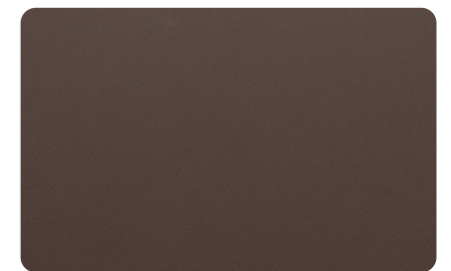
Textured Rough Cocoa
 ES2171



Textured Rough Ash
 ES2506



Textured Fine Green Bottle
 ES2102



Textured Fine Zinc Red
 ES2507



Alucoil®

Grupo Alibérico

Specialists in the Manufacture of
Advanced Materials for
Architectural Envelopes

Polígono Industrial de Bayas,
C/ Ircio, Parcelas R72-77
09200 Miranda de Ebro, Burgos, SPAIN
Tel.: +34 947 333 320
www.alucoil.com
info@alucoil.com



alucoildesign.com

Alucoil® S.A.U. reserves the right to change or remove information contained in this brochure without prior notice.
Please visit us at www.alucoil.com to check the latest version.

v.2022-02