



TRESPA® METEON® METALLICS, LUMEN & FOCUS

MATERIALISE  
IMAGINATION

Think Trespa

TRESPA®



# Context, light, shape & colour

To what extent does the space around a building define that building? Is the space around an object also part of that object? Does any structure really stand alone?

A building's environment is an essential component of its design. The surroundings are your canvas. Engage with nature, with other structures. Walk a fine line between contrast and harmony. Break down the boundaries between 'inside' and 'outside'. Manipulate scale and perspective. Invent finishes, suggest colours. Stimulate the imagination. Use the power of suggestion. Make the invisible visible.

Context, light, shape and colour help create structures that stand out and make a statement, whilst also blending into their environment. Trespas's latest innovations in finishes and design introduce exciting new ways to utilise these architectural elements. For our new Inspiration Book, we've asked architects to share some of the work they're most proud of. Projects in which they've taken a new approach to familiar elements. We hope this, in turn, will inspire you to explore and realise your highly personal vision in new ways.



# index

8



**Rundeskokogen Towers**  
Sandnes, Norway

28



**Office and home**  
Namur, Belgium



**Les Passerelles**  
Cran-Gevrier, France

52

22



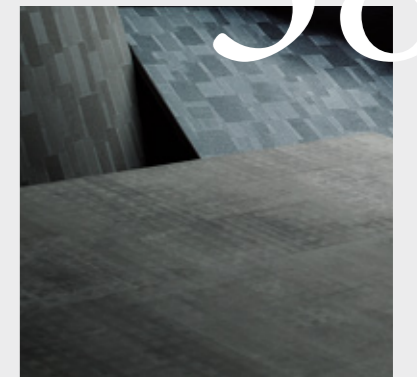
**Residence In Odalys**  
Marseille, France

42



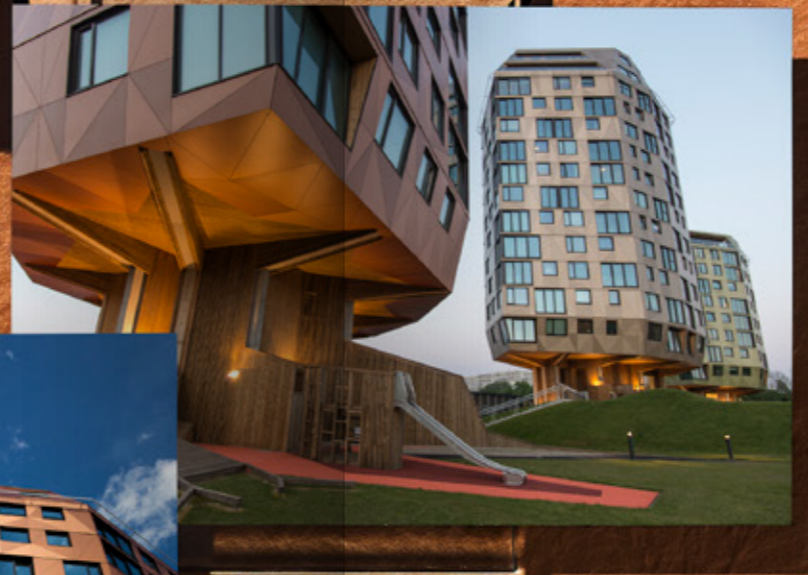
**Kennedy Plaza**  
Santiago, Chile

58



**Introducing  
Trespa® Meteon®  
Focus**





— Reflections of Norwegian Fjords

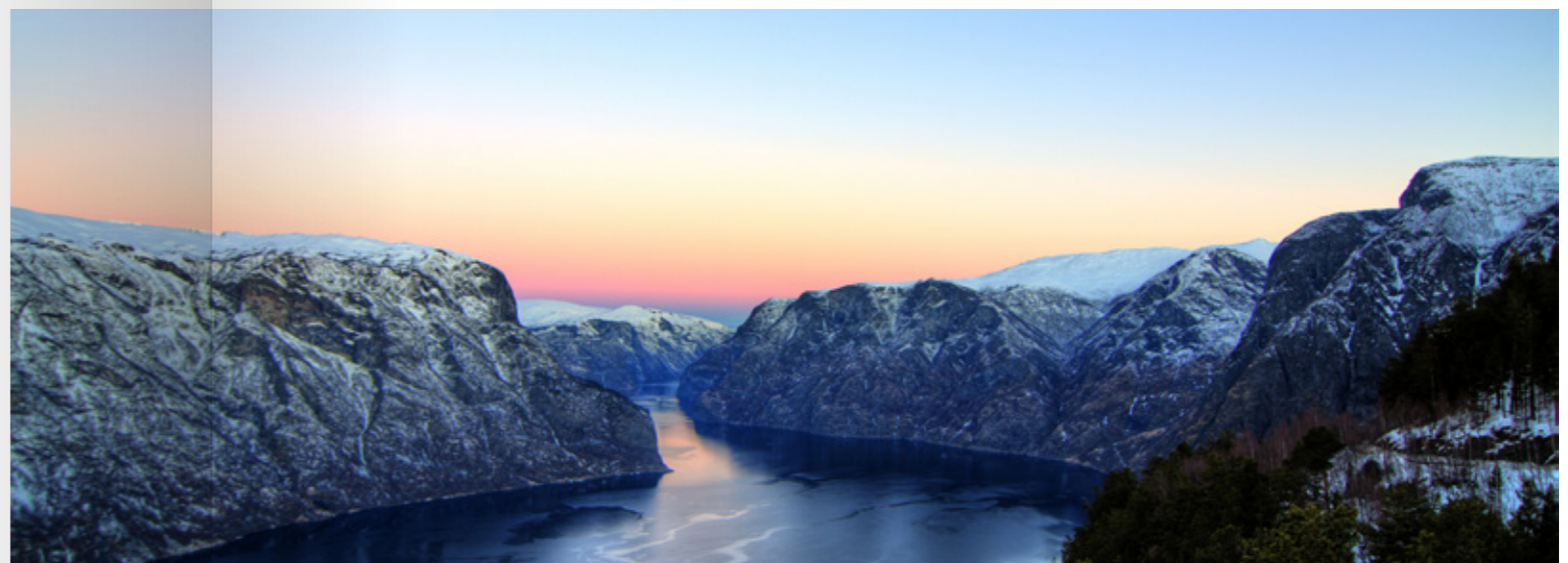
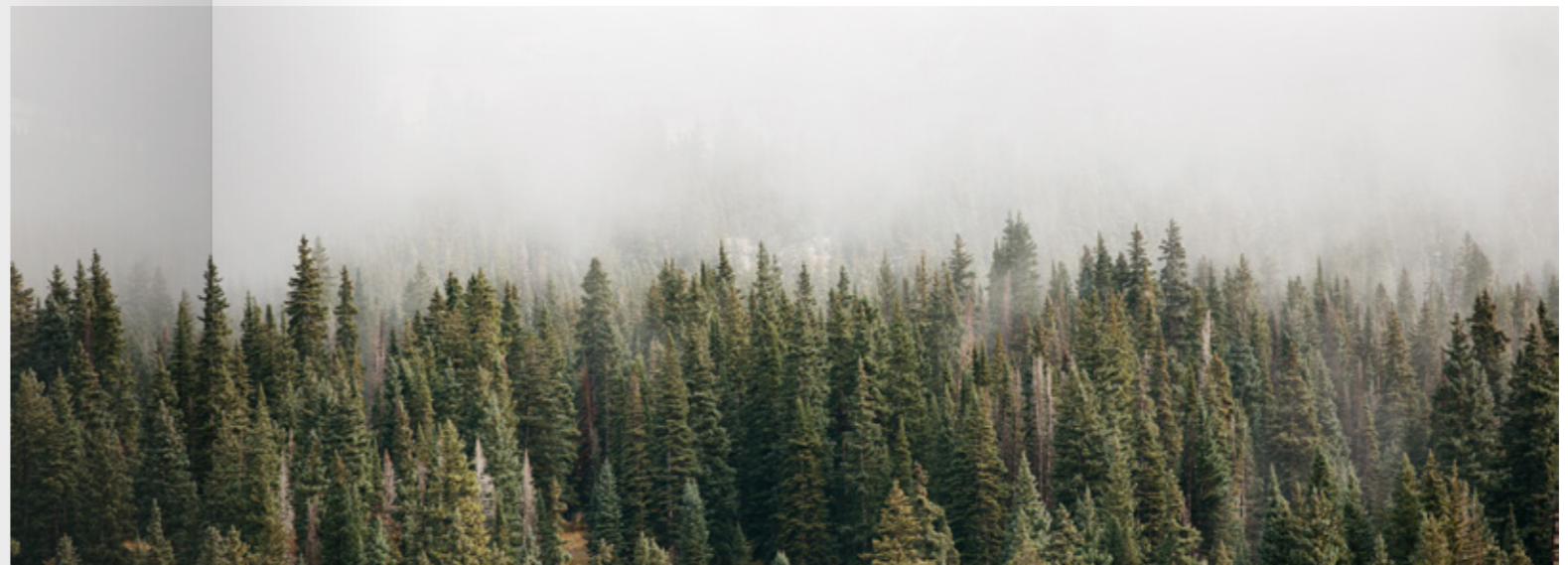
# Creating a sense of space and wonder



# RUNDESKOGEN TOWERS

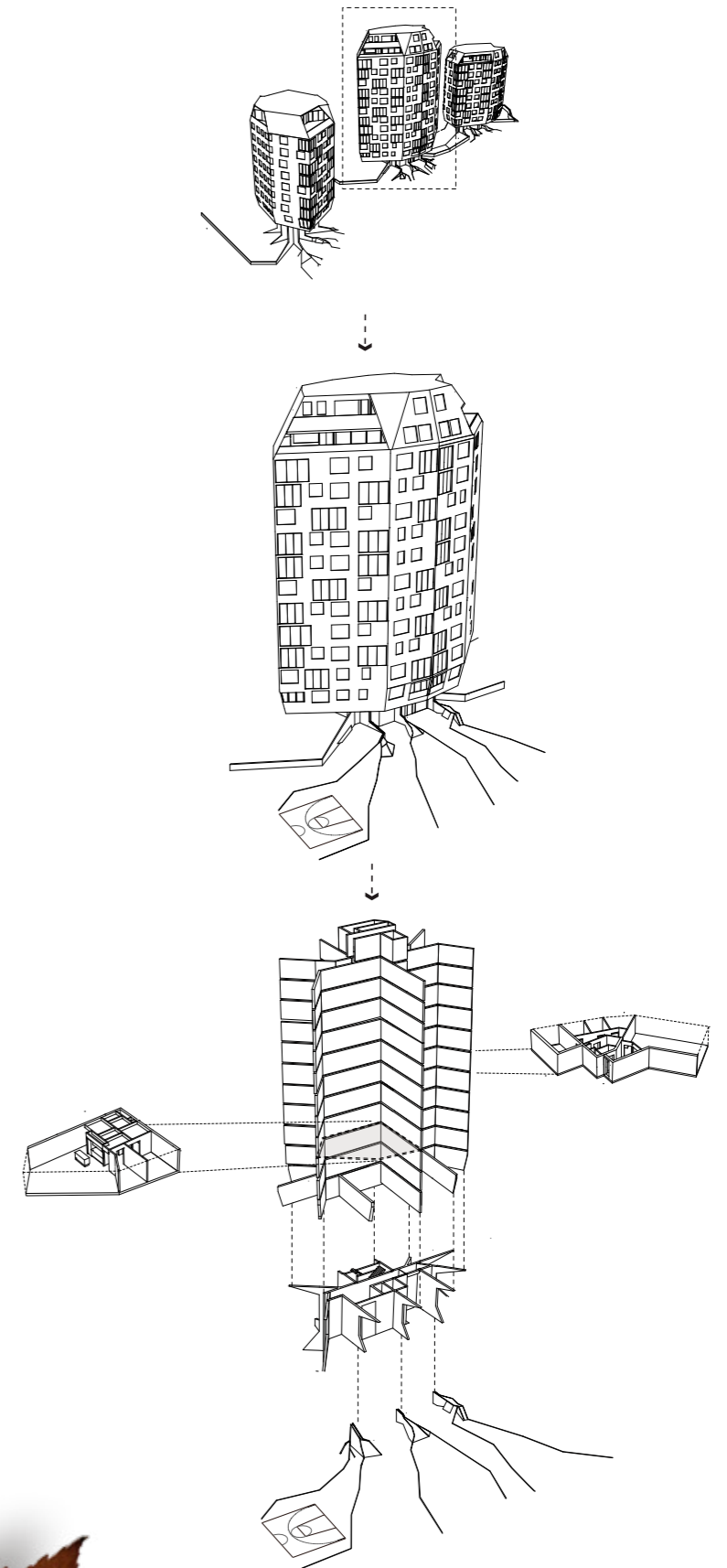
Three award-winning apartment buildings stand proudly atop Rundeskogen hill, which connects the cities of Sandnes, Stavanger and Sola. Situated between wide-open plains and dense forests, with the Gandsfjorden fjord to the east, the three towers on Norway's west coast afford truly breathtaking views. The towers are reminiscent of forms found in nature. The treelike structures have social and recreation spaces as their 'roots' and apartments that spread out like branches.

The buildings stand out amongst surrounding low-rise residential complexes and warehouses. However, a combination of innovative forms and materials allows them to blend in and offer a sense of openness and space. Coloured façades, reflecting the region's typical natural light are connecting the buildings to nearby residential areas and woodlands.



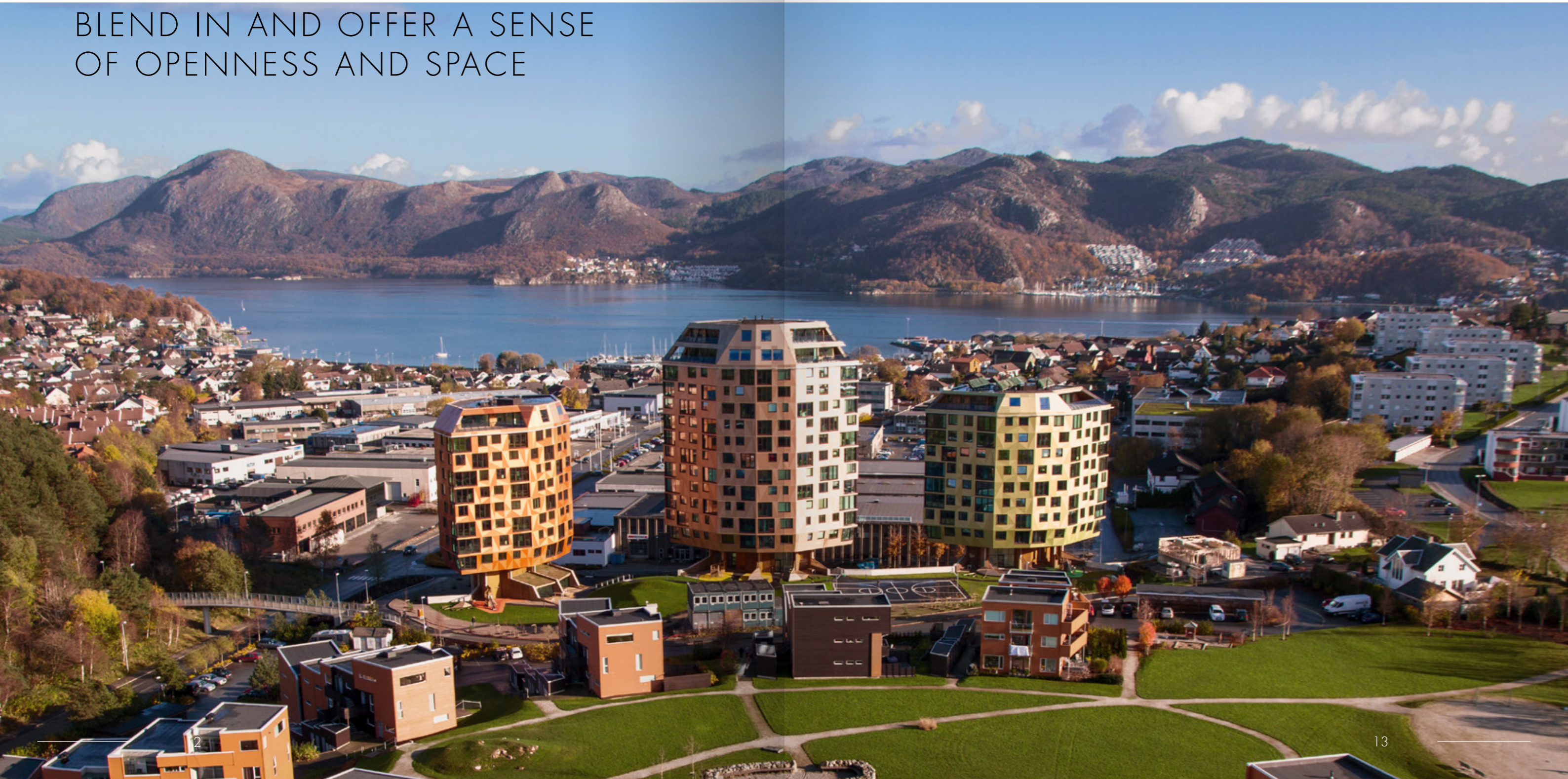


THE TOWERS ARE  
REMINISCENT OF  
FORMS FOUND  
IN NATURE

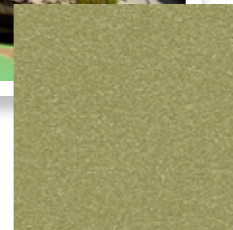
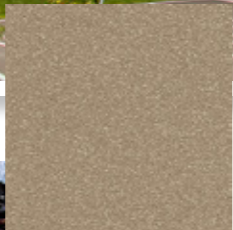




A COMBINATION OF  
INNOVATIVE FORMS AND  
MATERIALS ALLOWS THEM TO  
BLEND IN AND OFFER A SENSE  
OF OPENNESS AND SPACE







## PLAYING WITH NATURAL LIGHT

The initial idea was to build a single eight-storey block, but Architects Helen & Hard, Stavanger, and dRMM, London, decided to build three structures and lift the first floors to minimise their footprint and allow fjord views for adjacent houses. A key goal was to integrate the buildings into their surroundings. Low northern light playing off the buildings offered a unique opportunity to make them visually attractive, whilst perfectly matching their surroundings. Each building is clad in a Trespa® Meteon® Metallics 'Rock' decor - Copper Yellow, Amber and Mustard Yellow - selected to match the hues typical of different seasons.



COLOURED FAÇADES,  
REFLECTING THE REGION'S  
TYPICAL NATURAL LIGHT ARE  
CONNECTING THE BUILDINGS  
TO NEARBY RESIDENTIAL AREAS  
AND WOODLANDS

The panels were essential to helping create the desired effect, which is not unlike the way sunlight plays off of leaves. “When you visit the site, the first thing that strikes you is the raised platform, which creates a sense of space and wonder,” says Siv Helene Stangeland, partner and principal architect at Helen & Hard. “The other striking thing is the colourfulness of the buildings. As you walk around the site, the beautiful, low northern light gradually shifts around the façades.” Completed between 2012 and 2013, the towers have received numerous awards and recognitions, including an honourable mention at the 2014 Norwegian Award for building design and Architizer’s 2015 A+ Award Jury (Winner in residential multi-housing/high-rise category.)







“The beautiful, low northern light gradually shifts around the façades.”

*Siv Helene Stangeland, partner and principal architect at Helen & Hard*



## ODALYS

Distinct grey tones splashed with fuchsia mark the façade of ‘The Dome’, a luxurious apartment hotel near the Marseille sports arena of the same name. The grey façade and light and dark wedges around the front and back of the building act as a recognizable beacon.

The 12 floor apartment building on the busy Boulevard du Maréchal Juin offers 98 furnished apartments. The rear along the quiet Boulevard de la Fédération offers an urban retreat. “Environment and context must be the foundation of an architect’s conception,” says Architect Didier Roche of Cabinet Archipôle Sud. “However, we wanted this façade to arouse surprise and curiosity, too. The simple squared windows embedded in the façade offer a sleek urban contrast to the beige balconies of the neighboring structures. Alternating triangles create the illusion that the building’s façade is in motion. The fuchsia colour provides an animated and illuminating finishing touch.”

## Marseille hotel stands out and blends in with faceted façade



“Environment and context must be the foundation of an architect’s conception.”

*Didier Roche, Architect of Cabinet Archipôle Sud*



## ARCHITECTURE IS AN ADVENTURE

The overall effect is neither linear nor flat. Instead, successive waves of shiny grey façade cladding allow light to be reflected in different ways, according to their angle. Roche took a sculptural approach to the project; the material used for the façade allowed him to express himself through different configurations. The materials used provided exactly the perspective which the architectural team wanted.

“Architecture is an adventure,” Roche says. “Each project is unique and has its own particular style. It’s important that we modify our approach for each project, making every façade relevant to the type of building, whether this is a house, office or public facility. This particular faceted façade was inspired by the grey aluminium-coloured panels, with their dominant colour that changes with their angle. We were seduced by the metallic reflections of these panels, which gave us the idea to create a ‘façade in motion’ and the dynamic return using a three-dimensional effect based on creative use of the supporting construction. This resulted in triangular shapes and futuristic ripples that change in tone according to the position of the sun or moon, the time of the day, and the season.”





ALTERNATING  
TRIANGLES CREATE  
THE ILLUSION THAT THE  
BUILDING'S FAÇADE IS  
IN MOTION







— Inspiration in one colour

# Black speaks volumes





# BUREAU D'ARCHITECTURE CHRISTOPHE SECHEHAYE

In May 2015, Bureau d'Architecture Christophe Secheyaye began to convert two existing properties into a building with two apartments and an architectural office. The aim was to create a building that gently draws the attention of passers-by while creating a bird's eye view of the neighbourhood for the people inside.

*Photo: Christophe Secheyaye*







“We wanted to create an exceptional place to receive our clients.”

*Christophe Secheyne, architect*



THE LARGE STRUCTURE  
PERCHED ON TOP OF  
THE BUILDING IS ECHOED  
BY A BLACK MAILBOX  
NEAR THE ENTRANCE



The resulting structure blends in with the surrounding architecture, but still stands out in a unique and interesting manner. The first two levels of contain the apartments and sections of the office. The building's basic shape reflects other structures in the vicinity, but from the roof emerges a striking third level: a large black box. This unusual element houses the meeting room and offers views of the neighbourhood and vegetation while

creating a strong signal of space. The large structure perched on top of the building is echoed by a black mailbox near the entrance.

"We wanted to create an exceptional place to receive our clients," says architect Christophe Secheyay. "This meeting room is at the centre of our attention, just as we pay special attention to our clients."



THE COLOUR  
RELATES TO DEEP  
SPACE, WHERE  
LIGHT IS ABSORBED  
'METEORITE BLACK'

LED light plays on the Trespa®-clad office box and mailbox around the clock, emphasizing the diagonals and animating the two structures, creating volume and movement. “We selected the very matte Meteon® Lumen Diffuse product for the façade because we wanted to put forward the box and subtly attract the gaze of those walking past. If we had to choose a name for the colour we used, we would describe it in a way that relates to deep space, where light is absorbed. ‘Infinity Black’, for example, or ‘Meteorite Black.’”

“The building is a reflection of exactly the kind of architecture that excites us. The Trespa® product has been designed specifically to reflect the sun whilst absorbing some of the light and offering the suggestion of different colour variations. In our opinion, this product fulfils its promises. Its attractive matt surface provides a beautifully diffuse, calm surface that plays with light.”





ITS ATTRACTIVE MATT  
SURFACE PROVIDES A  
BEAUTIFULLY DIFFUSE,  
CALM SURFACE THAT  
PLAYS WITH LIGHT





— Architecture with chipe libre

# A dialogue between buildings



# KENNEDY PLAZA

The impressive Kennedy Plaza, Santiago de Chile, consists of two towers connected by a striking metallic walkway. Plannea Group architects Rodrigo Dominguez and José Antonio Coeymans were responsible for this design, based on the vision of Bernardo Valdés, main investor of project owner INCOVA real estate, who sadly passed away at the end of 2016.

"I want to make a contribution, a building with a great structure, surrounded by vegetation and spaces people can share," he said. "I want to create a positive impact, my main focus is not profitability." With this last comment he gave the architects 'chipe libre': the freedom to innovate, no matter what.

"I want to make a contribution, a building with a great structure, surrounded by vegetation and spaces people can share."

*Bernardo Valdés, main investor of project owner INCOVA real estate*





# ‘chipe libre’

The freedom to innovate,  
no matter what.



## INTRODUCING THE INNOVATION FACTOR

“The most relevant and challenging goal was realising communication between the city and the building,” explains architect José Antonio Coeymans. “We needed to combine urban life with this twin structure. Both towers should speak to the buildings around them, as if they were lego blocks.”

The architects understood that pollution and dust could ruin the look and feel of the ultra-modern building. They also knew that using the wrong façade material could increase the cost of maintenance. Project leader Rodrigo Dominguez explains: “We needed a material that would allow us to innovate and which would keep looking good and guarantee building conservation. The buildings are also allowed to breathe - air can pass through thanks to a ventilated façade principle, so that temperatures don’t reach uncomfortable levels.”

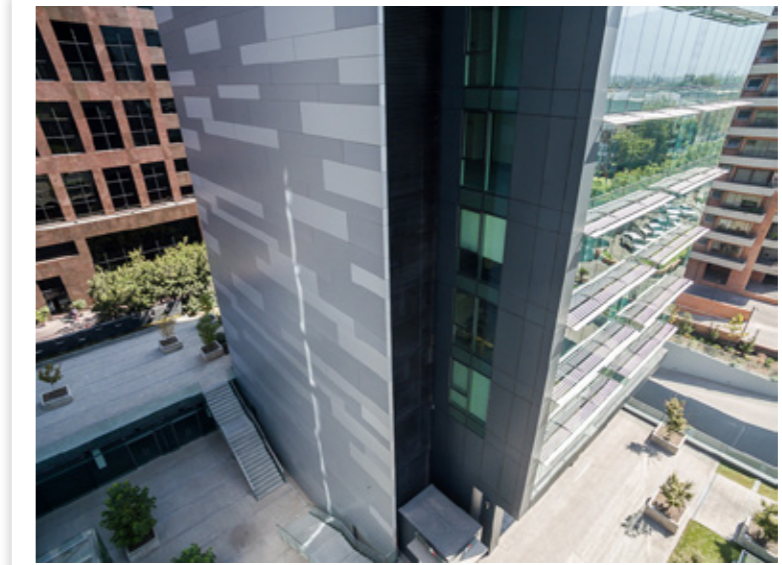
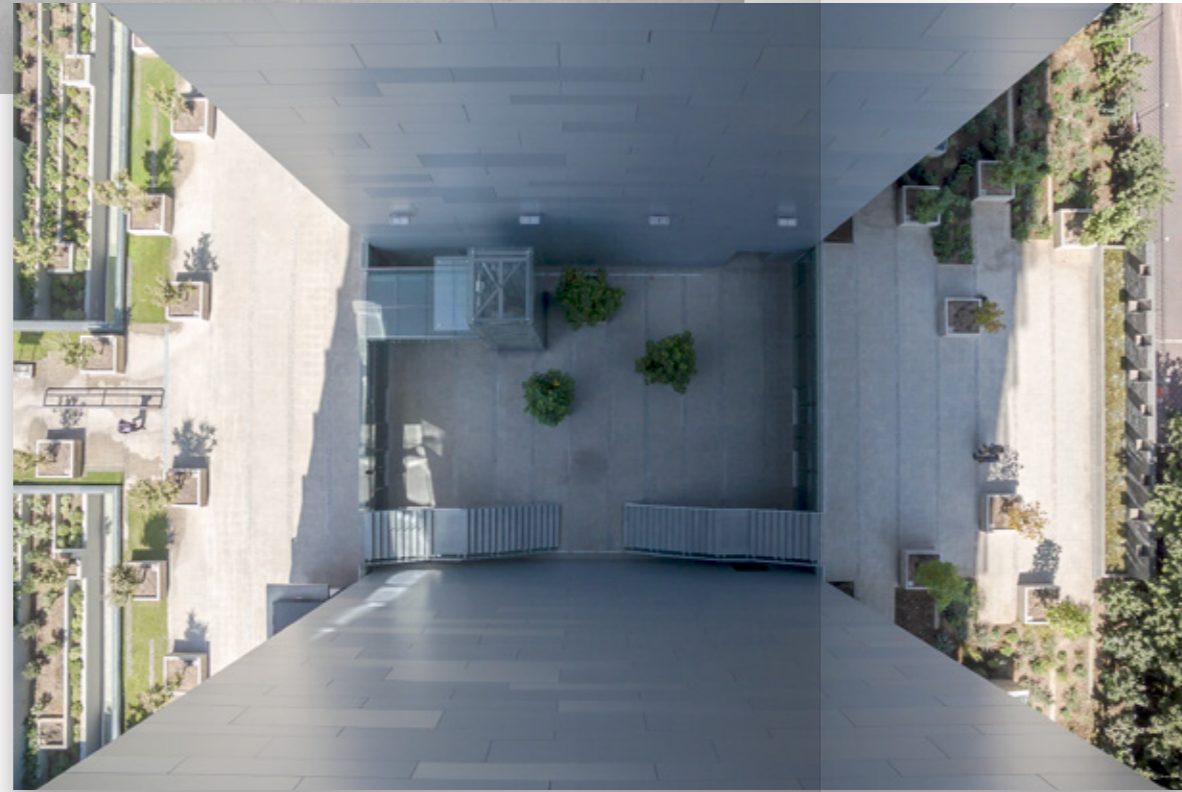
José Antonio concludes: “The real estate company wanted to innovate and Trespa® Meteon® Metallics made the difference.”





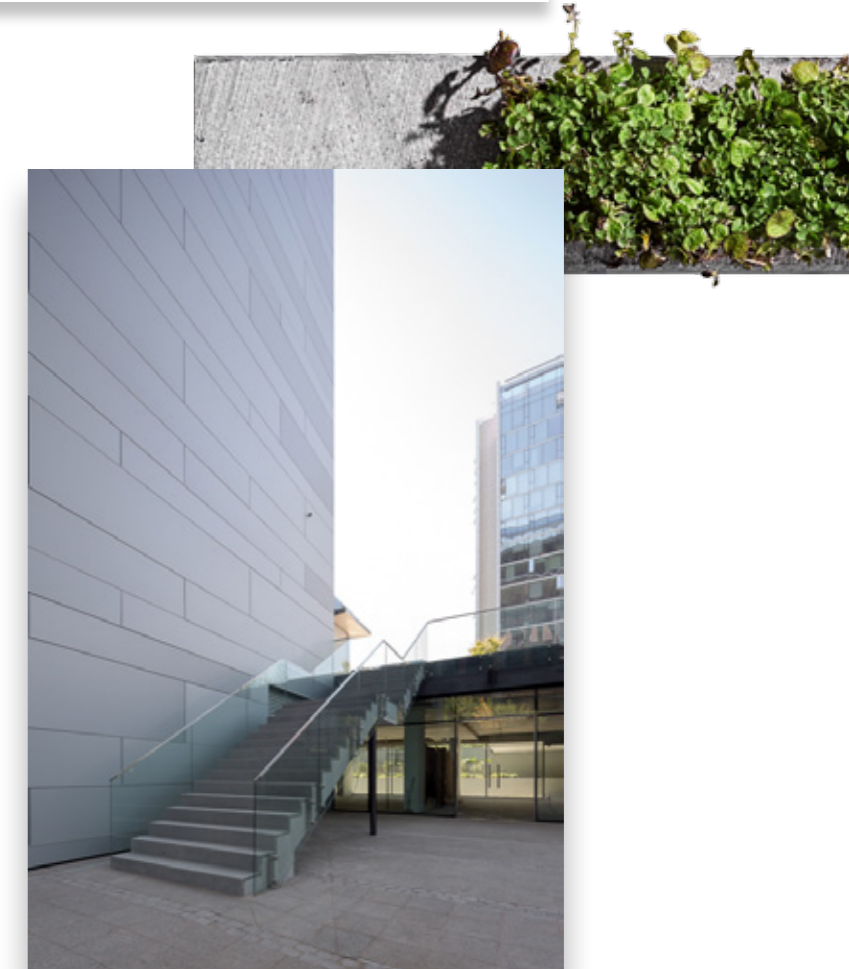
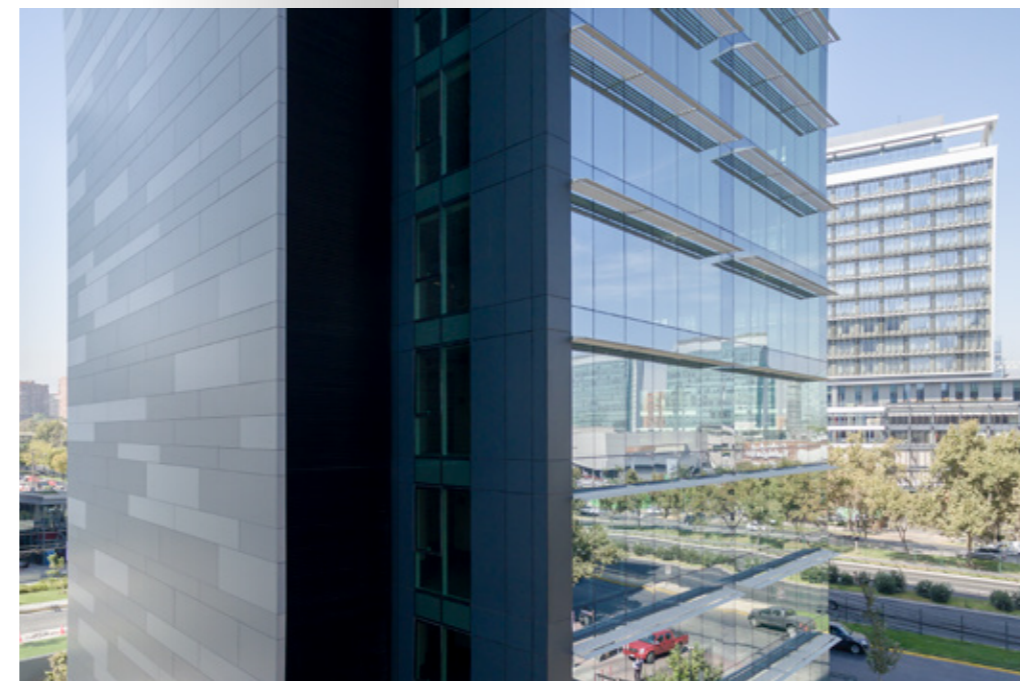


*Note: A special fixing is used for the ceiling application, which may not be suitable for all countries.*



“The most relevant and challenging goal was realising communication between the city and the building.”

*José Antonio Coeymans, architect at Plannea Group architects*







“We needed a material that would allow us to innovate and which would keep looking good and guarantee building conservation.”

*Rodrigo Dominguez, project leader at Plannea Group architects*





# Creating an 'eco-neighborhood': Les Passerelles in Cran-Gevrier

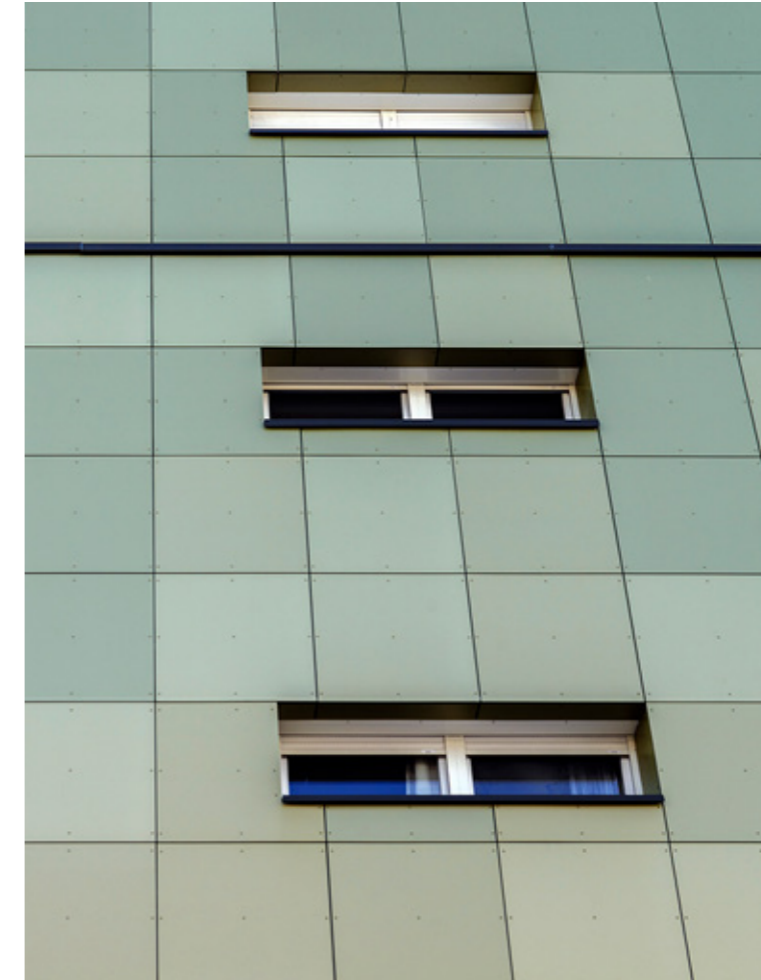
## LES PASSERELLES

Cran-Gevrier's 'Les Passerelles' district brings new life to a former industrial wasteland. Along the river Thiou, where a paper mill once stood, an ambitious 45,000 square meter urban renewal project which focuses strongly on respect for the environment is bringing new housing and economic activity.

AER Architects took on the task of designing two multi-family residency units in the northern sector of this 'eco-district'. Architects Arnaud Lavier & Frédérique Blanchard, teamed up with designers Thomas Gadesaude and Yvan Debrosse as well as urban planners and landscapers to construct the two residential buildings.

The architects drew their inspiration from the land that surrounds the buildings. Natural vegetation divides the northern sector and southern sector of the site. Near the entrance to the north tall trees demarcate a pedestrian area. Between the two buildings a garden has been constructed. Each residence is part of a global harmony and a lasting coherence of the site, according to a statement issued by the architects.

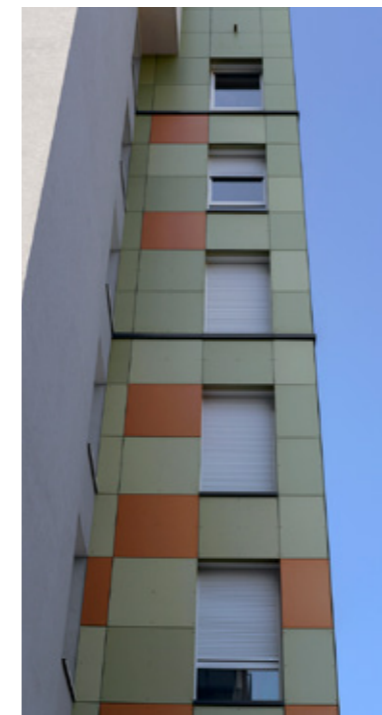




“The effect created by using Trespa® Meteon® Metallics creates a striking visual animation through reflections.”

*Arnaud Lavier, architect at AER Architects*



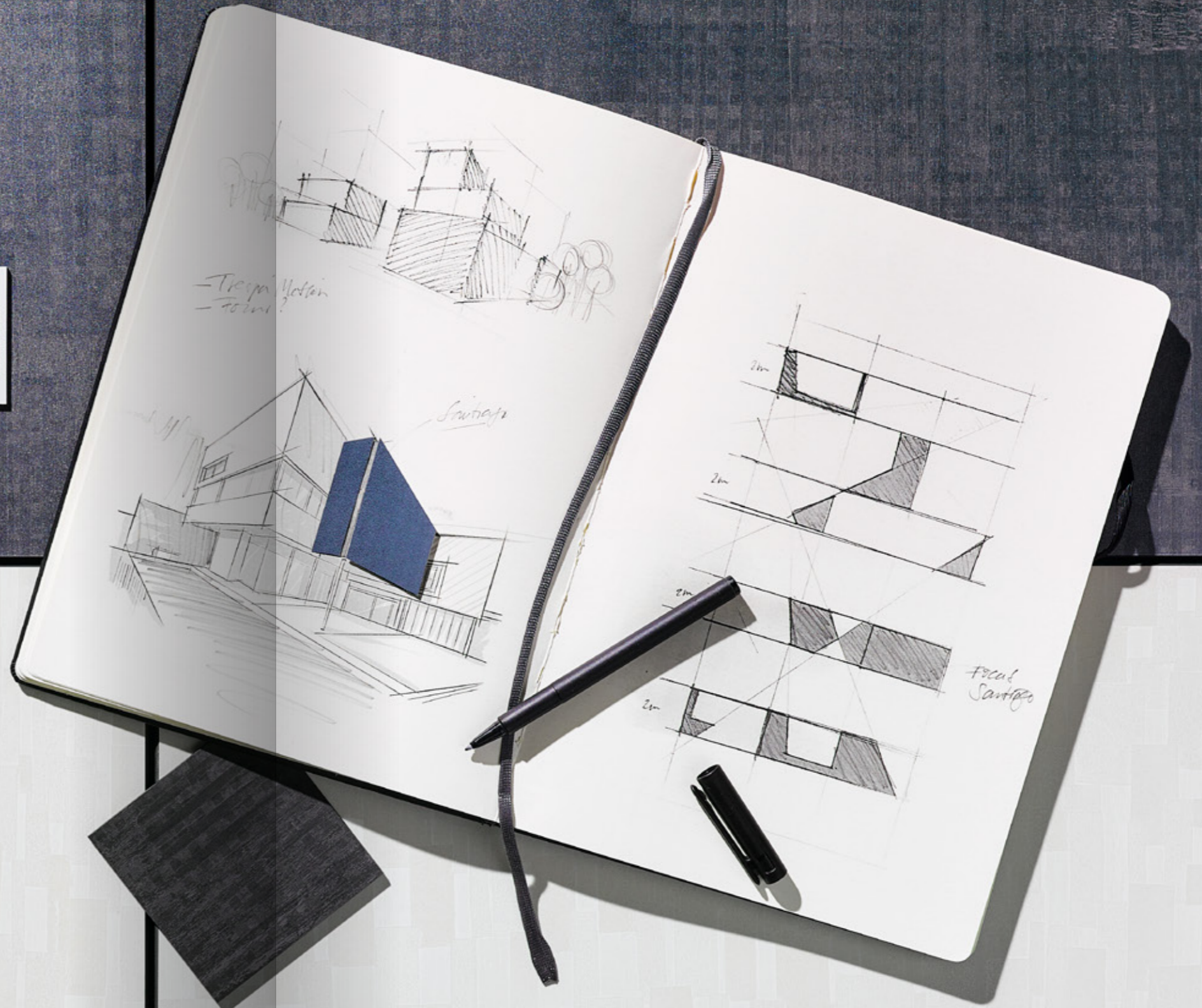
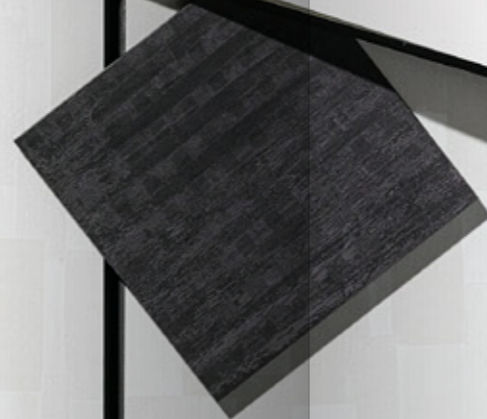


## UNIQUE PLAY OF LIGHT AND SHADE

The team understood that a sober appearance was required, in line with the reverence for nature that typifies the project. The buildings also needed to reflect the history and vegetation of the unique site. The buildings are brought to life with striking elements such as loggias and terraces that break up their mass and verticality. “The open gardens on the mall and the promenade along the Thiou are accessible to all residents,” explains Arnaud Lavier. “Visual transparency from the mall to the banks of the Thiou was one of the key objectives.”

To achieve this, each building is smaller than the preceding one and the colours change from each building to the next, creating a natural fading effect towards the river. For visual consistency, the base of each building is treated in a similar manner. Natural light is allowed to filter through the sheltered premises in the back. Arnaud Lavier: “The effect created by using Trespa® Meteon® Metallics creates a striking visual animation through reflections. This allows for the unique play of light and shade between the residential buildings and surrounding nature.”

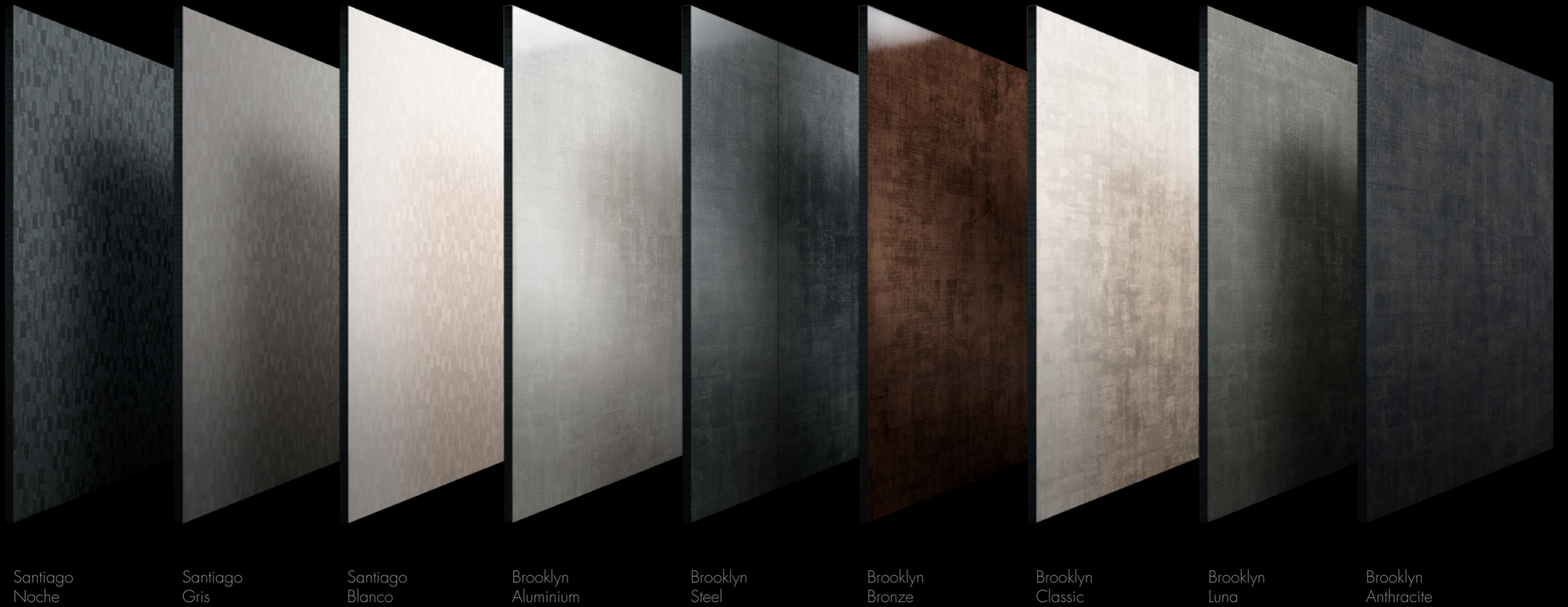




— Introducing

# Abstract interpretations & ephemeral traces





INTRODUCING  
TRESPA® METEON®  
FOCUS

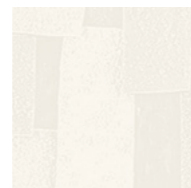
Designers and architects now have an entirely new range of ways to introduce innovative, timeless looks and effects for building façades. Buildings can blend in with different surroundings, make bold statements, and everything in between.



The innovative Trespa® Meteon® Focus range allows architects to introduce new designs that go beyond unicolours or products inspired by natural materials. The Trespa® Meteon® Focus Santiago designs are based on an abstract interpretation of a cityscape, defined by light reflections and building contours, whilst the Trespa® Meteon® Focus Brooklyn designs are inspired by intriguing ephemeral traces. Each design brings its own story of inspiration.



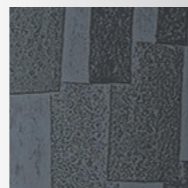
## SANTIAGO



**NEW** CM05.04  
Santiago Blanco



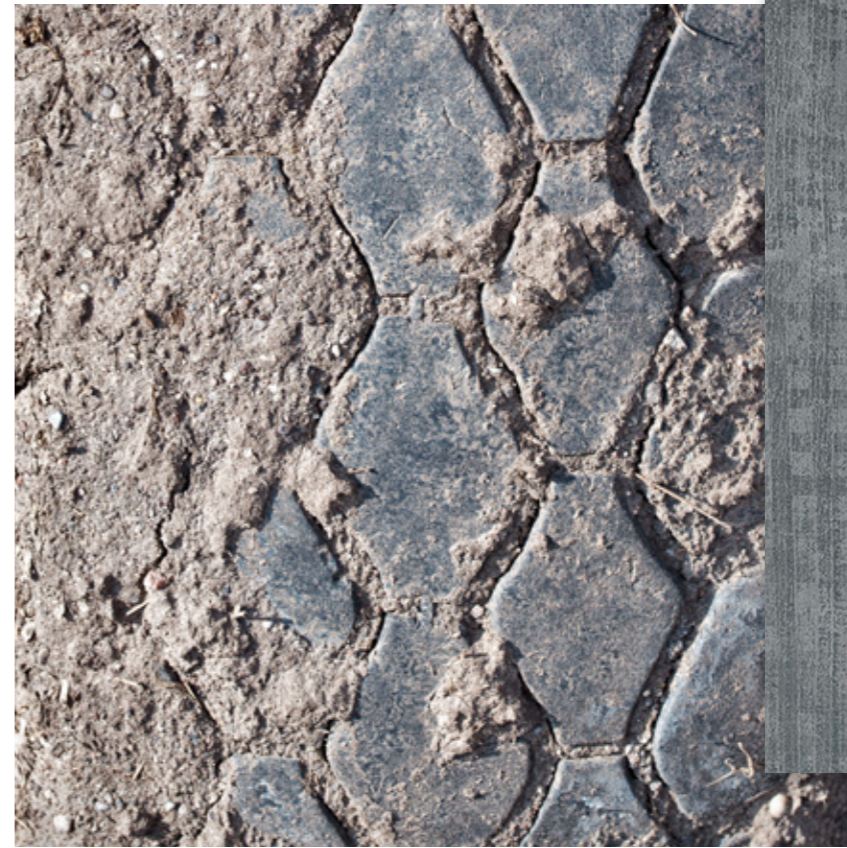
**NEW** CM05.21  
Santiago Gris



**NEW** CM05.25  
Santiago Noche



## BROOKLYN



**NEW** C08.03  
Brooklyn Classic



**NEW** C08.21  
Brooklyn Luna



**NEW** C08.25  
Brooklyn Anthracite



**NEW** CM09.51  
Brooklyn Aluminium



**NEW** CM09.03  
Brooklyn Steel



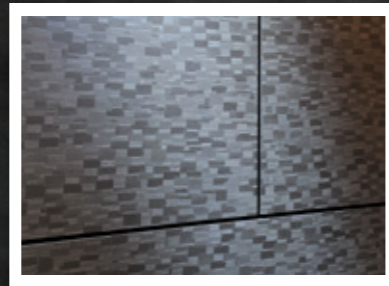
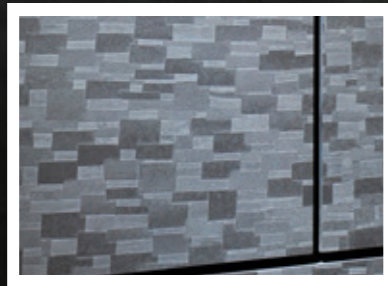
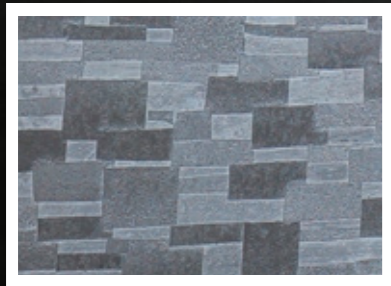
**NEW** CM09.06  
Brooklyn Bronze



## THE EFFECT OF PERSPECTIVE

Introduce a lively suggestion of movement.  
Work with an edgy urban, industrial vibe.  
Break up potentially monotonous surfaces  
without resorting to overly outspoken  
patterns, finishes and colours.

Play with the effects of the material, which  
varies at different distances. Trespa® Meteon®  
Focus brings any surface to life. Combining  
different Trespa® Meteon® variations offers  
even more new expressive opportunities.







# BRING YOUR IDEAS TO LIFE

CALL US **+31 (0) 495 458 839**

UK **0808-2340268**

FOLLOW US      

VERSION 1.0 • BROCHURE CODE U2088 • DATE 07-2017

**Think Trespa**

TRESPA®